

LAKE KAMPESKA

**Key:**

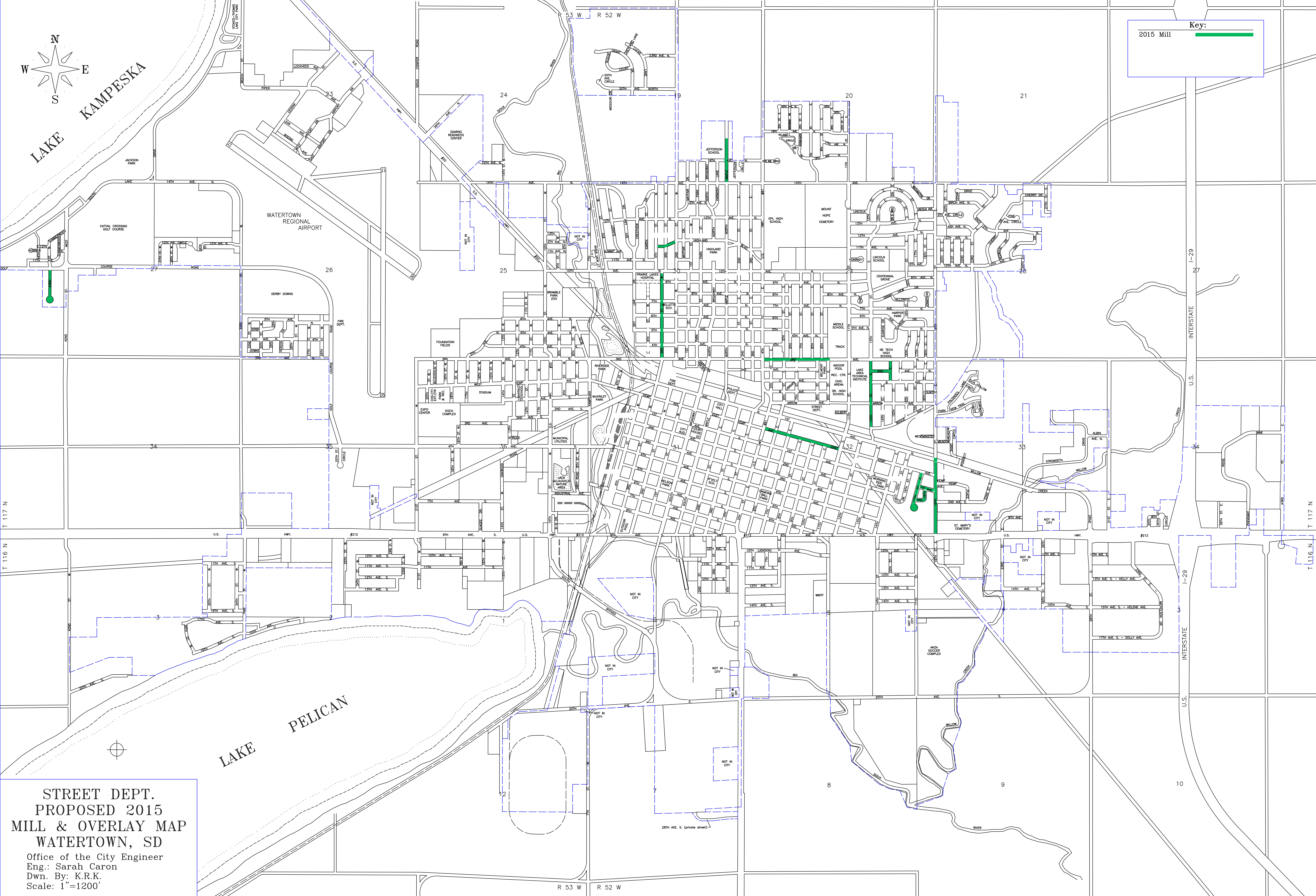
2015 Mill

WATERTOWN REGIONAL AIRPORT

LAKE PELICAN

**STREET DEPT.  
PROPOSED 2015  
MILL & OVERLAY MAP  
WATERTOWN, SD**

Office of the City Engineer  
Eng.: Sarah Caron  
Dwn. By: K.R.K.  
Scale: 1"=1200'



R 53 W R 52 W

INTERSTATE I-29 U.S. INTERSTATE I-29

T 117 N

T 116 N

T 117 N

T 116 N